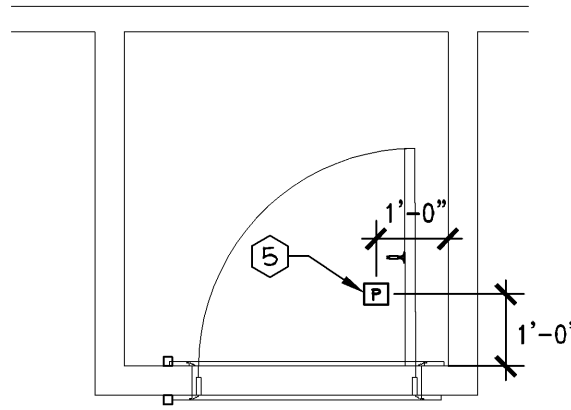


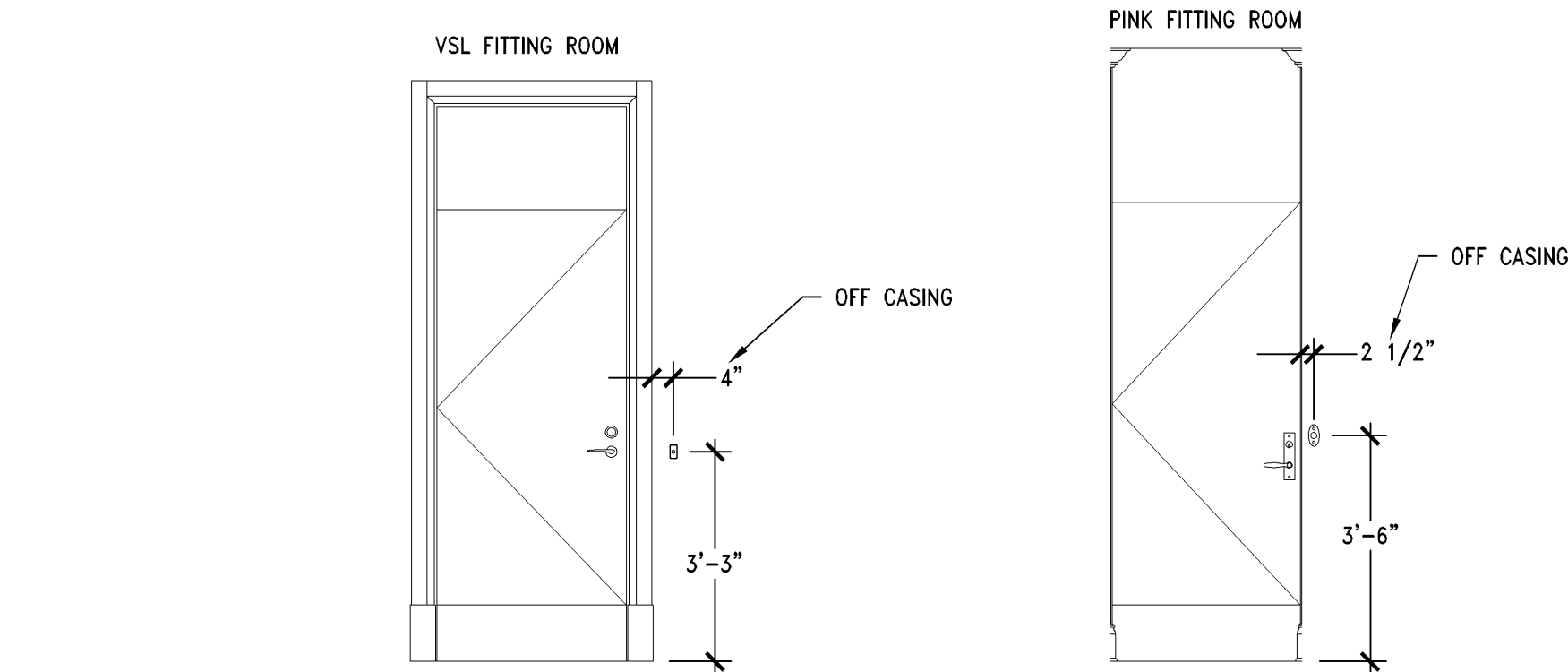
A ELEVATION



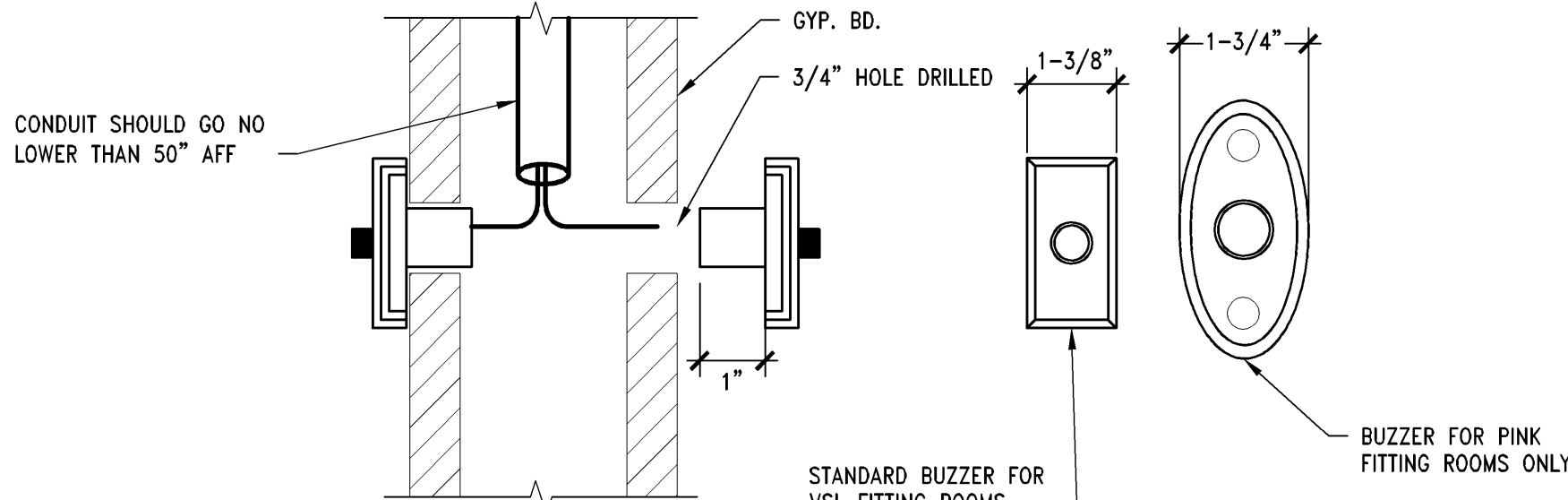
B IR BACK BOX PLACEMENT

FITTING ROOM PAGING SYSTEM CODED NOTES

- CONTROL PANEL FOR PAGING SYSTEM, MOUNTED 90° AFF ON PLYWOOD TELEPHONE BACKBOARD.
- 20 AMP, 120 VOLT SINGLE PHASE ISOLATED DEDICATED CIRCUIT, 20 AMP (PASS & SEYMOUR) #16300-W RECEPTACLE, WITH ISOLATED THIRD WIRE GROUND, IN A SINGLE 3/4" CONDUIT BACK TO PANEL BOARD SECTION OF THE SWITCHGEAR. DO NOT SHARE ANY PART OF THIS CIRCUIT WITH ANY OTHER BRANCH CIRCUITS. PLACE OUTLET WITHIN 4' OF PANELS.
- MICRO TERMINAL CO-LOCATED ALONG SIDE THE CENTRAL CABINET. DATA AND POWER IN CATS PLENUM RATED CABLE. WIRED BY ELECTRICAL CONTRACTOR AND TERMINATED BY PAGING SYSTEM VENDOR.
- WIRE IS CAT 3, PLENUM RATED, 4 PAIR, 24 AWG CABLE HOME RUN TO EACH FITTING ROOM. WIRE SUPPLIED BY PAGING SYSTEM VENDOR. WIRED BY ELECTRICAL CONTRACTOR AND TERMINATED BY PAGING SYSTEM VENDOR. INSTALL IN CONDUIT IF REQUIRED BY CODE.
- RACO 4 11/16" SQUARE BACK BOX #B257 WITH WUD RING #B18. WIRE SUPPLIED BY PAGING SYSTEM VENDOR. WIRED BY ELECTRICAL CONTRACTOR AND TERMINATED BY PAGING SYSTEM VENDOR.
- CONDUIT SHALL BE RUN FROM CEILING BOX DOWN WALL ADJACENT TO LATCH SIDE OF DOOR, TERMINATION AT 50" AFF.



C SWITCH-FRONT ELEVATION



D SWITCH-SIDE VIEW

FITTING ROOM PAGING SYSTEM

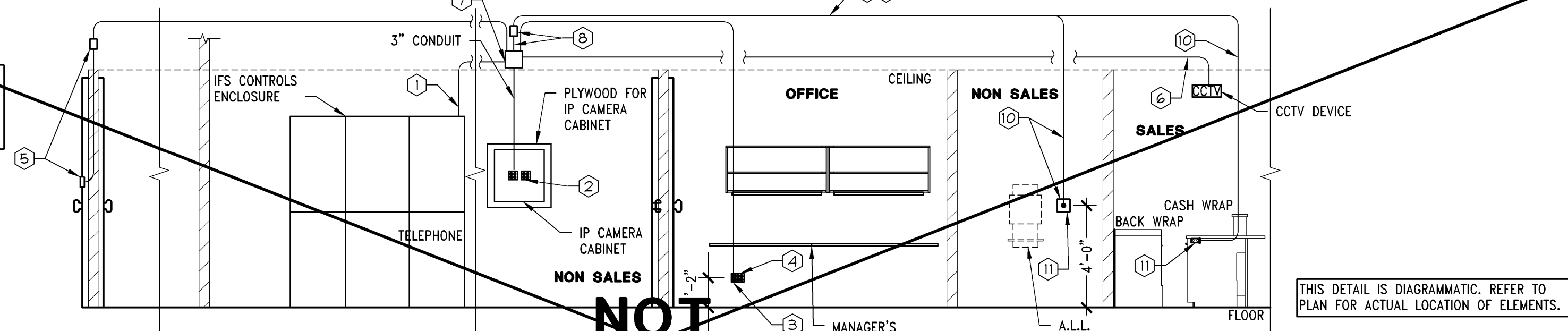
3/8" = 1'-0"

OSD-E0402-L01-PAGE

L

02/21/14

IP CABINET MAY BE MOUNTED VERTICALLY WITH THE MUSIC OR VIDEO CABINET. COORDINATE ALL POWER REQUIREMENT BETWEEN ITEMS. REFER TO ARCHITECTURAL DRAWINGS FOR MOUNTING HEIGHTS.

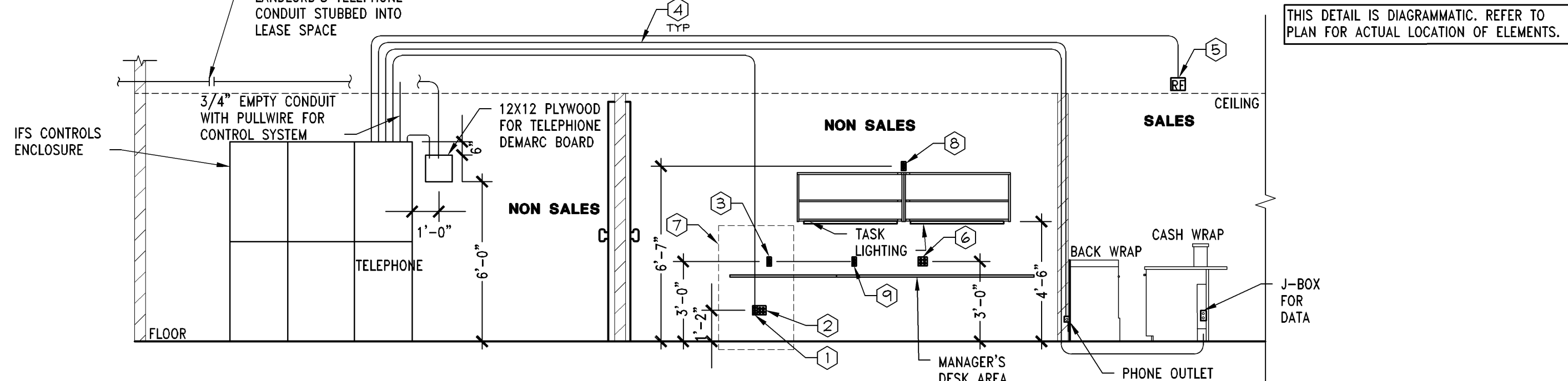


IP CAMERA NOTES

- 1/2" CONDUIT AND PULL STRING FROM DATA SECTION OF IFS ENCLOSURE TO 8X8 JUNCTION BOX ABOVE CEILING OF IP CABINET.
- 20 AMP, 120 VOLT ISOLATED GROUND QUAD RECEPTACLES AND (2) CIRCUITS, WITH A 3/4" CONDUIT BACK TO PANELBOARD SECTION OF THE SWITCHGEAR. ALIGN OUTLETS WITH HOLE IN THE CENTER OF IP CABINET, REFER TO ARCHITECTURAL DRAWINGS.
- 24X JUNCTION BOX FOR DATA. ELECTRICAL CONTRACTOR TO RUN A 3/2" EMPTY CONDUIT, WITH PULLWIRE TO 8X8 JUNCTION BOX, ABOVE IP CAMERA CABINET.
- 20 AMP, 120 VOLT SINGLE PHASE ISOLATED DEDICATED CIRCUIT, 20 AMP #16300-W RECEPTACLE, WITH ISOLATED THIRD WIRE GROUND, IN A SINGLE 3/4" CONDUIT BACK TO PANELBOARD SECTION OF THE SWITCHGEAR FOR COMPUTER TERMINAL. DO NOT SHARE ANY PART OF THIS CIRCUIT WITH ANY OTHER BRANCH CIRCUITS.
- KEYPAD PROVIDED AT LATCH SIDE OF DOOR. PROVIDE 4X4 JUNCTION BOX ABOVE CEILING AT KEYPAD LOCATION WITH 1/2" CONDUIT AND PULLSTRING DOWN WALL TERMINATING NO LOWER THAN 50" A.F.F. CONNECT 4X4 JUNCTION BOX TO 8X8 JUNCTION BOX ABOVE IP CABINET WITH 1/2" CONDUIT AND PULLSTRING. ENSURE THAT A MINIMUM 18X18 ACCESS PANEL PANEL IS PROVIDED IN CEILING FOR CONTROLLER.
- IF REQUIRED BY LOCAL CODE, FURNISH AND INSTALL 4X4 JUNCTION BOX AT EACH CCTV DEVICE WITH 1/2" CONDUIT BACK TO 8X8 J-BOX.
- 8X8 JUNCTION BOX ABOVE CEILING, 3" CONDUIT IN FRONT OF WALL TO TERMINATE INTO KNOCKOUT HOLE ON TOP OF IP CABINET.
- PROVIDE 4X4 JUNCTION BOX ABOVE CEILING OF IP CABINET CONNECTED TO 8X8 JUNCTION BOX WITH 1/2" CONDUIT AND PULLSTRING.
- PROVIDE 1/2" CONDUIT AND PULLSTRING FROM 4X4 JUNCTION BOX TO A 24X JUNCTION BOX WITH BLANK COVER PLATE IN WALL AT 48" A.F.F. ADJACENT TO 8X8 SYSTEM. COORDINATE FINAL LOCATION WITH LS&C PROJECT MANAGER.
- PROVIDE 1/2" CONDUIT AND PULLSTRING FROM 4X4 JUNCTION BOX TO BE STUBBED UP INTO CASHWRAP FOR POTENTIAL PUSH-BUTTON INSTALLATION. (CONDUIT SHALL RUN ADJACENT TO OTHER CONDUIT IN CASHWRAP).
- IP SYSTEM PUSH-BUTTON TO BE MOUNTED ADJACENT TO A.L.L. SYSTEM WHEN PRESENT. IF A.L.L. SYSTEM IS NOT PLANNED FOR INSTALLATION (VERIFY WITH LS&C PROJECT MANAGER) THEN BUTTON SHALL BE INSTALLED IN CASHWRAP.

IP CAMERA SYSTEM

FOR INFORMATION REGARDING LOW VOLTAGE AND TELEPHONE SYSTEMS CONTACT LIMITED TECHNICAL SERVICES (LTS) AT 1-614-415-1011.



LOW VOLTAGE SYSTEM NOTES

- 24X JUNCTION BOX FOR DATA, TELEPHONE, FAX, AND PULLING. ELECTRICAL CONTRACTOR TO RUN A 1" EMPTY CONDUIT, WITH PULLWIRE, BACK TO TELCO SECTION OF THE SWITCHGEAR FOR EASE OF WIRE PULLING AT THE END OF THE CONSTRUCTION PHASE. DATA/TELEPHONE WIRE AND COVERPLATE BY OTHERS.
- 20 AMP, 120 VOLT SINGLE PHASE ISOLATED DEDICATED CIRCUIT, 20 AMP #16300-W QUAD RECEPTACLE, WITH ISOLATED THIRD WIRE GROUND, IN A SINGLE 3/4" CONDUIT BACK TO PANELBOARD SECTION OF THE SWITCHGEAR FOR COMPUTER TERMINAL. DO NOT SHARE ANY PART OF THIS CIRCUIT WITH ANY OTHER BRANCH CIRCUITS.
- 20 AMP, 120 VOLT DUPLEX RECEPTACLE CIRCUIT AND DUPLEX RECEPTACLE FOR UTILITY POWER, IN A SINGLE 3/4" CONDUIT BACK TO PANELBOARD SECTION OF THE SWITCHGEAR.
- FURNISH AND INSTALL 1/2" CONDUITS WITH PULL WIRE TO BACK WRAP, FURNISH AND INSTALL 1" CONDUIT WITH PULL WIRE TO CASH WRAP, MANAGER'S AND DISTRICT MANAGER'S DESK AREAS. DATA CABLES BY OTHERS. CONDUIT INSTALLATION IS FOR EASE OF WIRE PULLING AT THE END OF THE CONSTRUCTION PHASE. REFER TO CASH WRAP DETAIL FOR ADDITIONAL INFORMATION.
- FURNISH AND INSTALL 1/2" CONDUIT WITH PULL STRING AND JUNCTION BOX MOUNTED ON THE BUILDING STRUCTURE ABOVE AND NOT AT CEILING LEVEL FOR EACH RF ANTENNA LOCATION. RUN CONDUIT BACK TO LOW VOLTAGE SECTION OF ITS ENCLOSURE DO NOT DAISY CHAIN TO ONE ANOTHER. ENSURE AN ACCESS POINT IS NEAR EACH RF ANTENNA LOCATION.
- 20 AMP, 120 VOLT QUAD RECEPTACLE CIRCUIT AND QUAD RECEPTACLE FOR UTILITY POWER, IN A SINGLE 3/4" CONDUIT BACK TO PANELBOARD SECTION OF THE SWITCHGEAR.
- COMBINATION OF OUTLETS IS REQUIRED FOR ALL COMPUTER STATIONS IN OFFICES UNLESS OTHERWISE NOTED. SEE ELECTRICAL POWER PLAN FOR QUANTITY.
- 20 AMP, 120 VOLT DUPLEX RECEPTACLE CIRCUIT AND DUPLEX RECEPTACLE FOR TASK LIGHTING. WIRE RECEPTACLE TO BE CONTROLLED BY OCCUPANCY SENSOR IN ROOM.
- 20 AMP, 120 VOLT USB CHARGER RECEPTACLE TO BE LOCATED IN A COMMON AREA IN OFFICE.

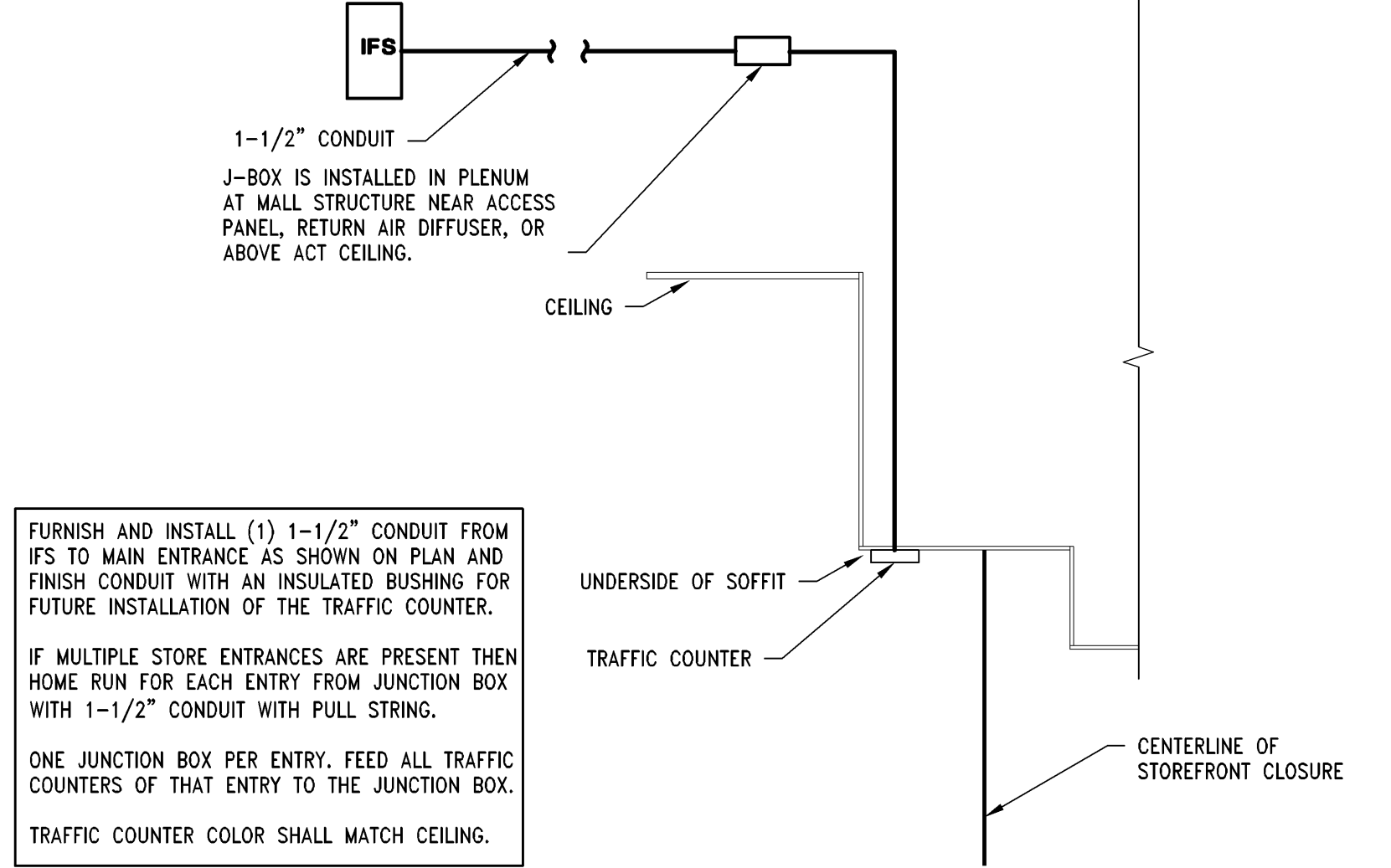
LOW VOLTAGE SYSTEM SCHEMATIC

1/4" = 1'-0"

OSD-E0402-C00-LVLT

C

02/21/14



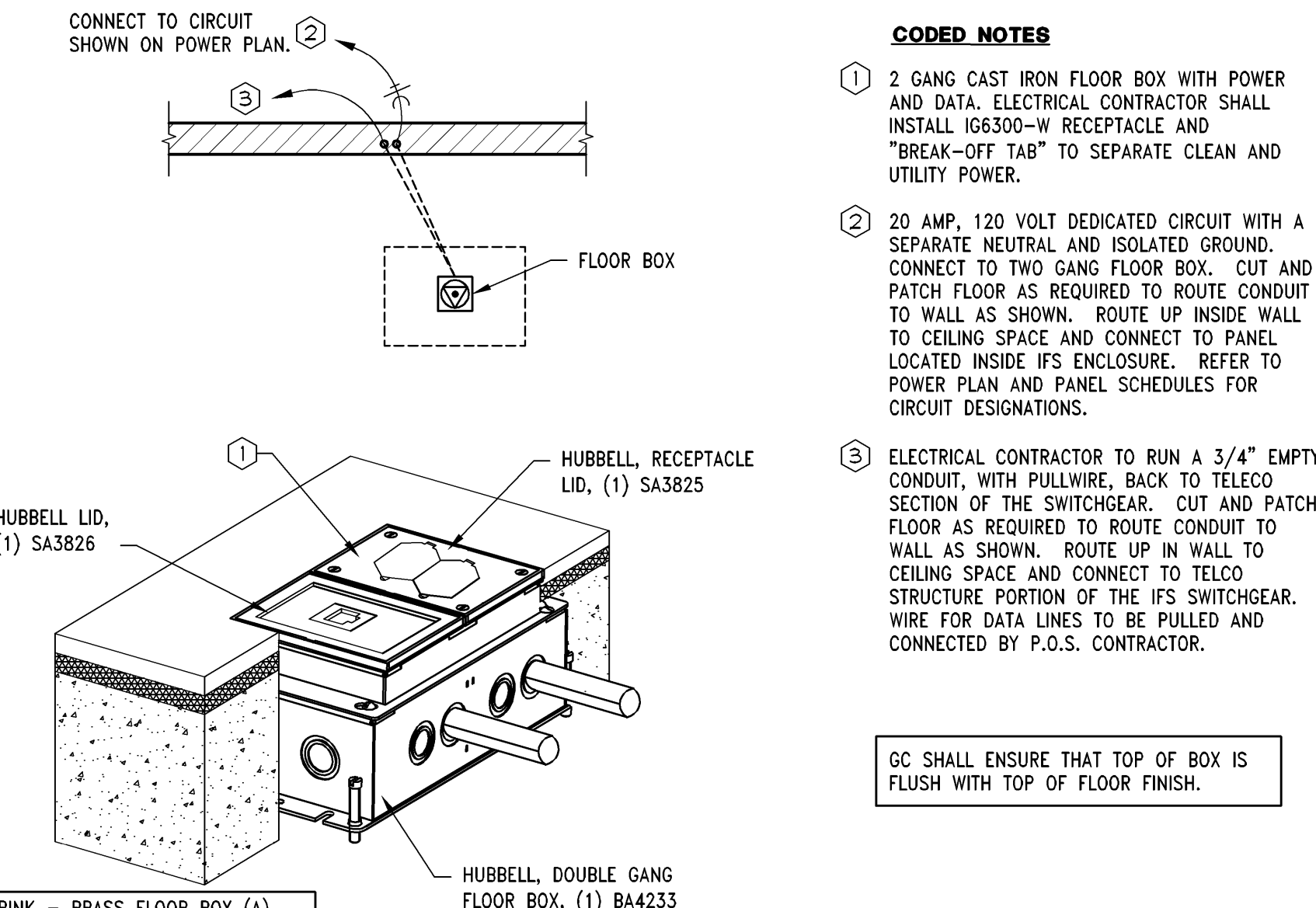
TRAFFIC COUNTER DETAIL - VS

3/4" = 1'-0"

OSD-E0402-N00-TRAF

N

02/21/14



FLOOR BOX RECEPTACLE W/ DATA

3" = 1'-0"

OSD-E0402-K00-RECP

K

02/21/14

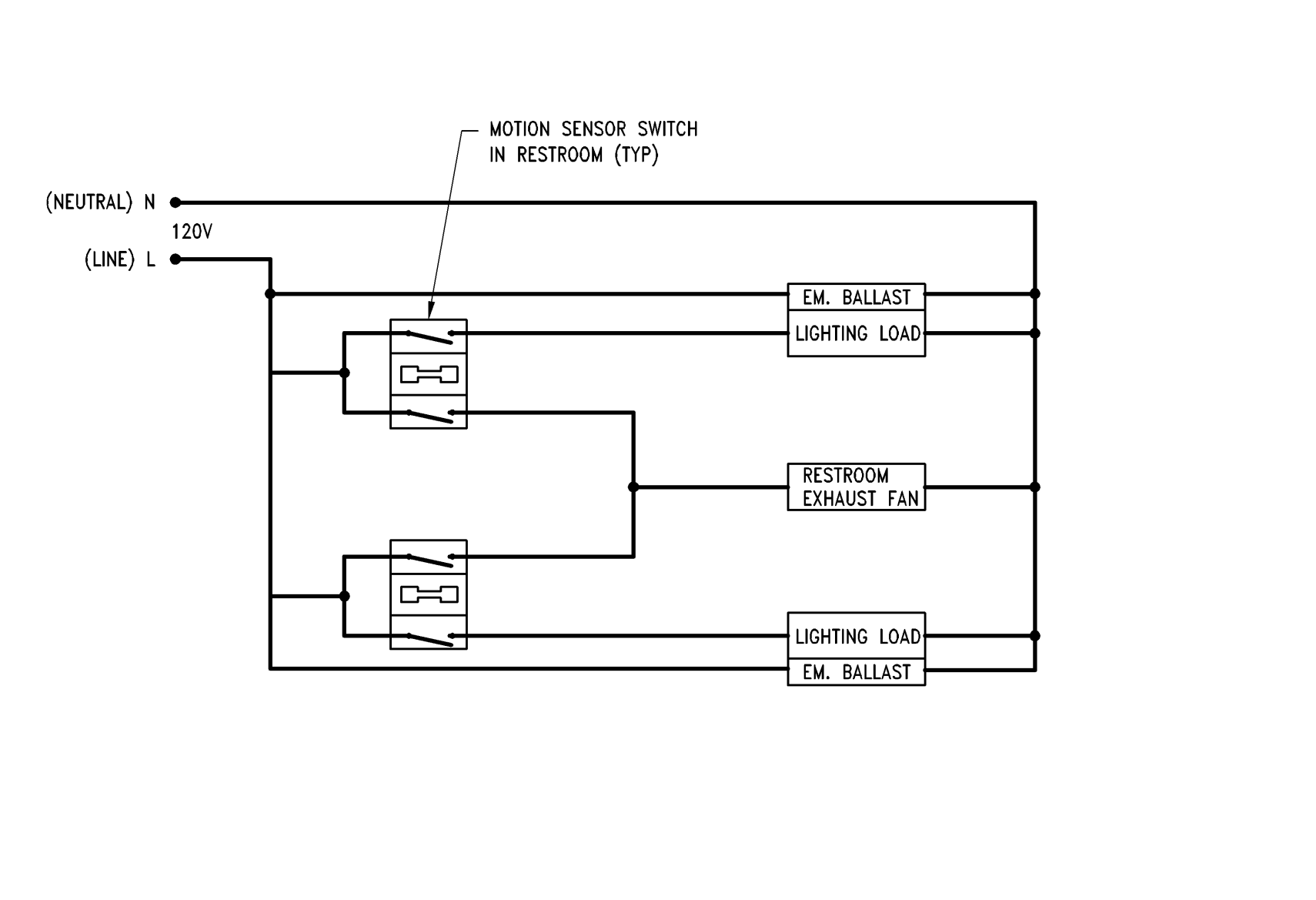
DELIVERY BUZZER SCHEMATIC

NTS

00D-E0402-F00-BUZZ

F

02/06/11



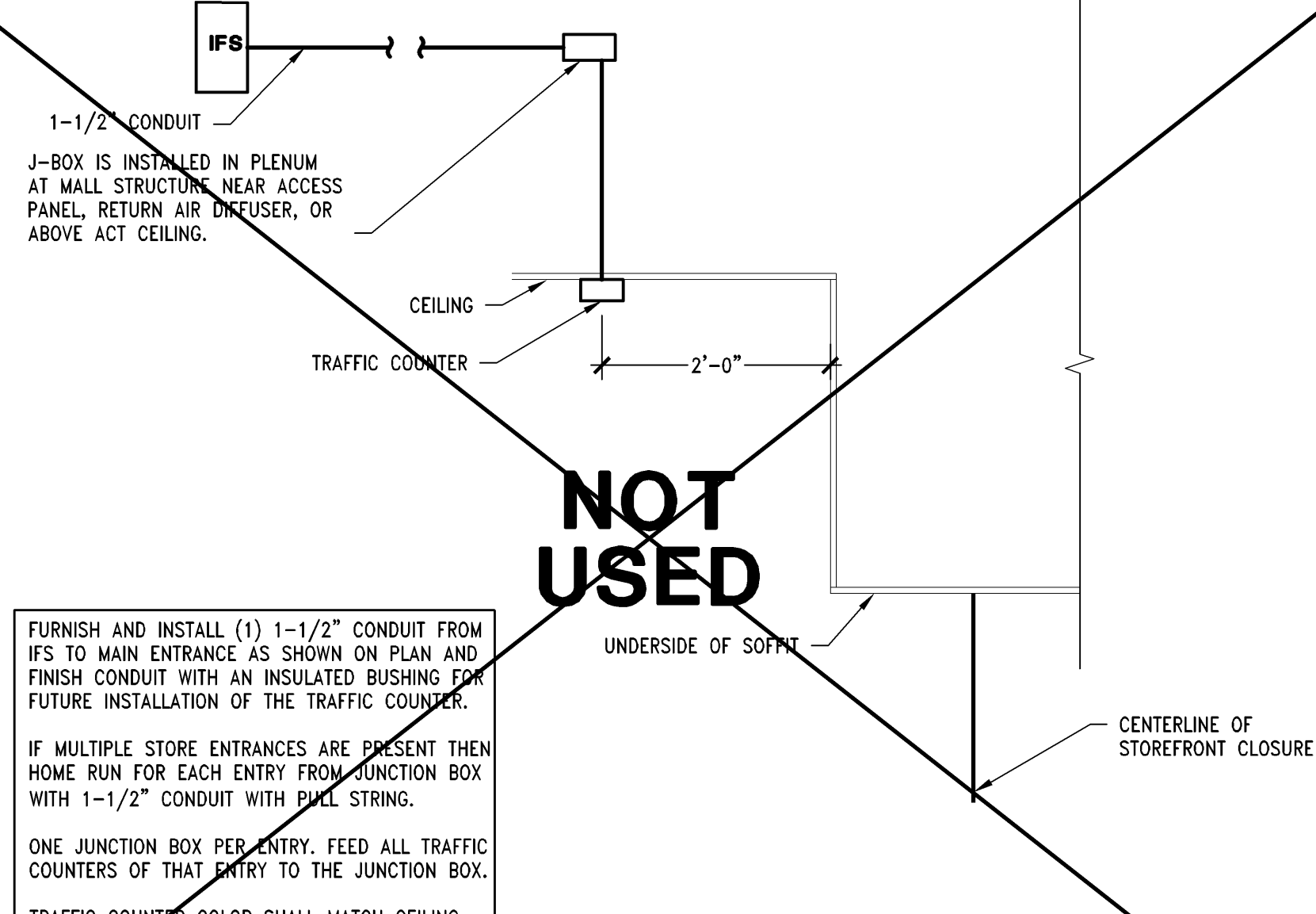
SCHEMATIC FOR 2 R.R EXHAUST FAN

NTS

05D-E0402-B00-XFAN

B

02/06/11



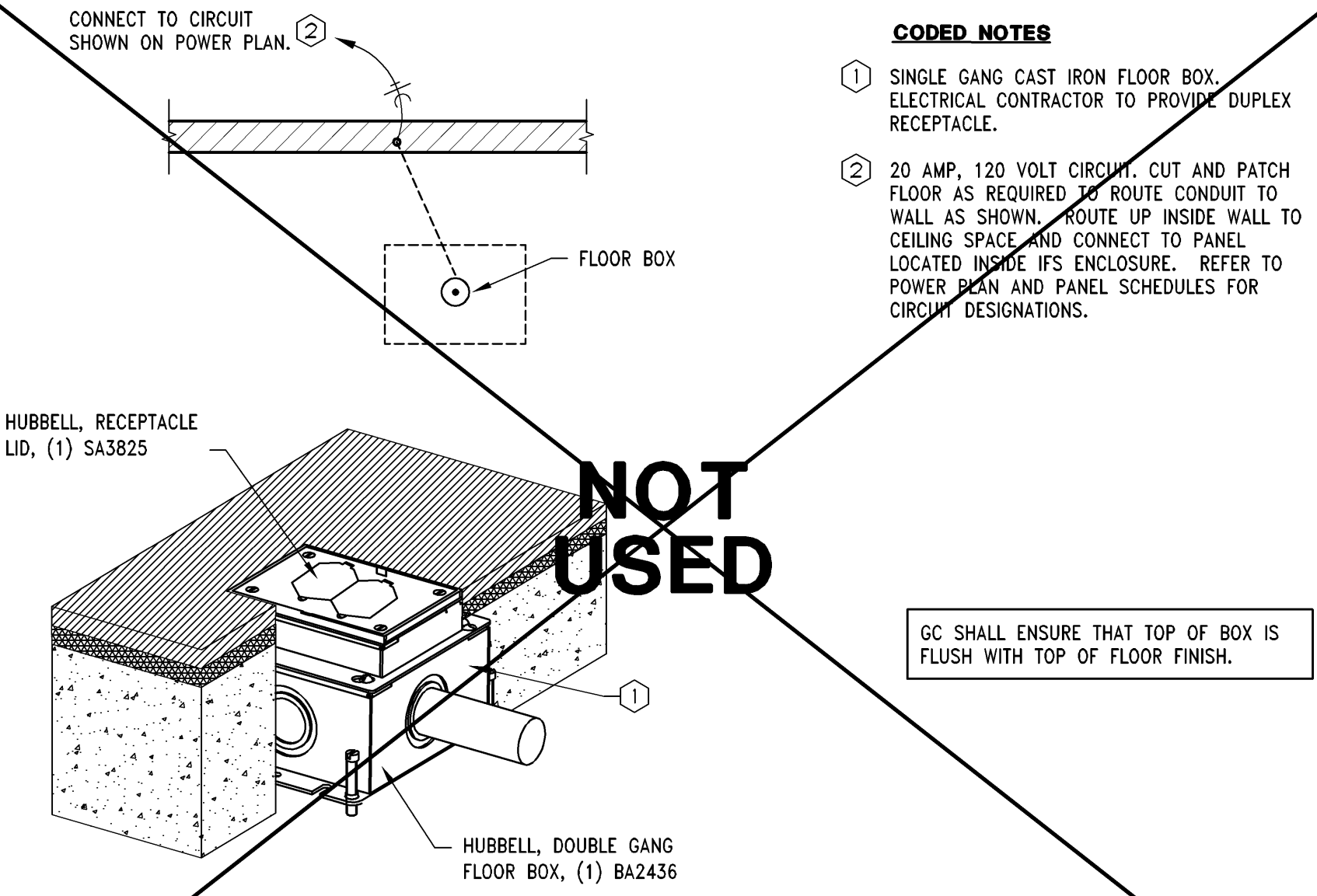
TRAFFIC COUNTER DETAIL - CEILING MOUNTED

3/4" = 1'-0"

OSD-E0402-M00-TRAF

M

02/21/14



FLOOR BOX RECEPTACLE

3" = 1'-0"

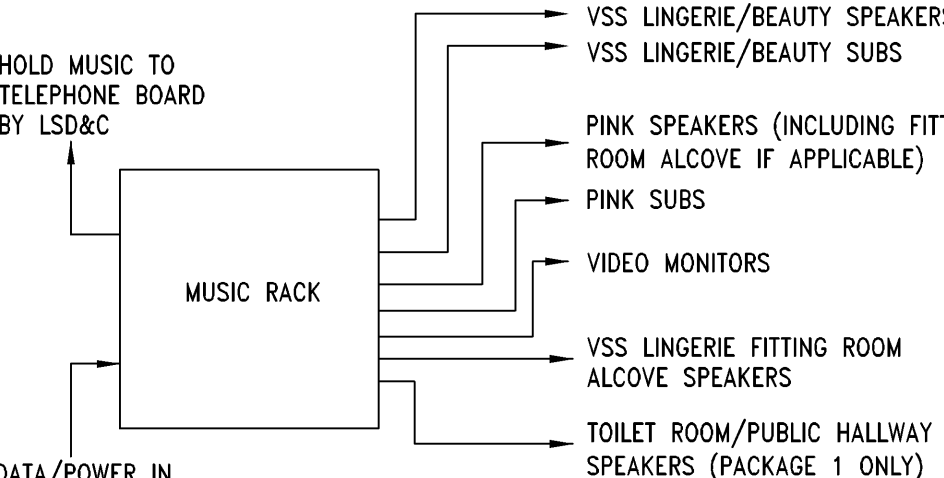
OSD-E0402-J00-RECP

J

02/21/14

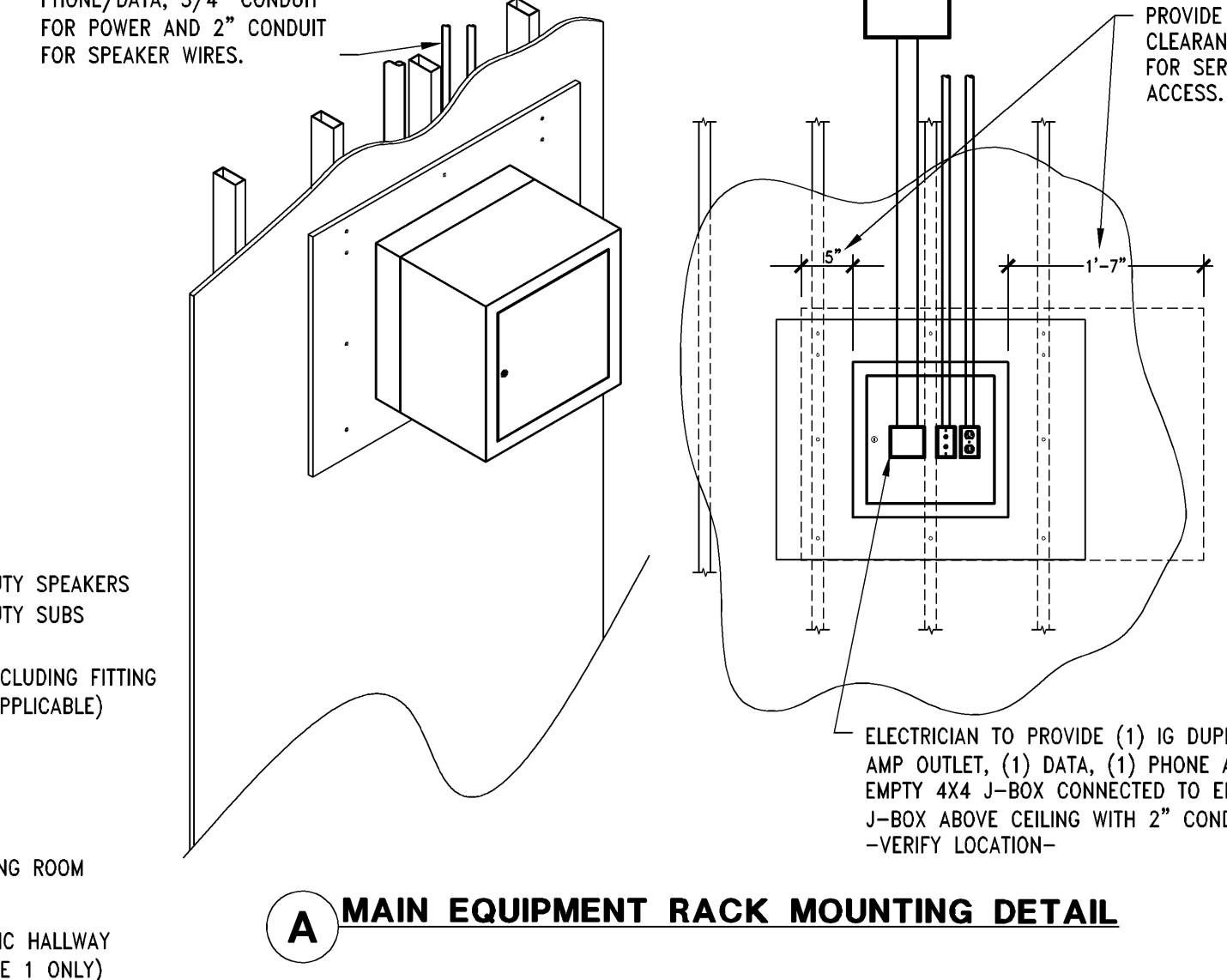
SOUND SYSTEM GENERAL NOTES

- IF LOW VOLTAGE WIRING IS INSTALLED IN CONDUIT, NO OTHER LOW VOLTAGE WIRING SHALL BE ROUTED IN THE SAME CONDUIT AS THE SPEAKER WIRING.
- REFER TO STORE SPECIFIC SHOP DRAWINGS FOR EXACT SOUND SYSTEM REQUIREMENTS
- ALL SPEAKERS WITHIN 10'-0" OF A CASHWRAP ARE TO BE TURNED DOWN ONE STEP.
- SPEAKERS IN PINK FITTING ROOM ALCOVES ARE TO BE ZONED W/ PINK ROOMS. STEP DOWN VOLUME AS NECESSARY.
- ELECTRICAL CONTRACTOR TO PRE-WIRE SPEAKERS W/VENDOR SUPPLIED WIRE. PRE-INSTALL VENDOR SUPPLIED SPEAKER MOUNTINGS IN ANY GYPSUM BOARD CEILING LOCATIONS. SPEAKERS ARE TO BE DAISY CHAINED IN SEQUENCE.



SOUND/VIDEO SYSTEM INSTALLATION DETAIL

MAIN EQUIPMENT RACK MOUNTING DETAIL



MUSIC ON HOLD NOTES

- IF PLAYNETWORK FINAL INSTALL TEAM IS IN THE LOCATION FIRST (MOST LIKELY SCENARIO)...
- PLAYNETWORK INSTALLATION TEAM WILL MAKE THE APPROPRIATE CONNECTIONS TO THE TERMINAL IN THE MUSIC SYSTEM EQUIPMENT RACK. THEY WILL THEN RUN 20GA, 2 CONDUCTOR, SHIELDED CABLE FROM THE RACK UP THROUGH THE CONDUIT IN THE WALL INTO THE CEILING. THE CABLE WILL THEN BE SECURED ABOVE THE CEILING, AND RUN DOWN INTO THE ELECTRICAL AND COMMUNICATIONS CABINET WHERE THE PHONE SYSTEM IS TO BE HOUSED.
- PLAYNETWORK INSTALLATION TEAM WILL LEAVE A 4' LOOP OF CABLE, CLEARLY LABELED "MUSIC ON HOLD", IN THE LOWER RIGHT-HAND SECTION OF THE CABINET.
- FINALLY, PLAYNETWORK INSTALLATION TEAM WILL TEST THE LINE TO CONFIRM THAT THERE IS AN APPROPRIATE LEVEL OF MUSIC PRESENT AND DEMONSTRATE SAME TO THE GC AND/OR STORE MANAGEMENT IN ORDER TO GET "SIGN-OFF".
- WHEN SPENCER ARRIVES TO DO FINAL INSTALL OF THE PHONE SYSTEM, THEY WILL MAKE THE FINAL CONNECTION TO THEIR ROL-TX1A IN THE COMMUNICATIONS CABINET. AT THAT TIME THEY WILL BE RESPONSIBLE FOR TESTING THE MUSIC ON HOLD FUNCTION OF THE PHONE SYSTEM IN ORDER TO ADJUST THE MUSIC TO THE PROPER LEVEL AND GET SIGN-OFF FROM THE GC AND/OR STORE MANAGEMENT.
- IF SPENCER IS THE FIRST INSTALL TEAM ON SITE...
- SPENCER WILL RUN 18GA 2 CONDUCTOR CABLE FROM THEIR ROL-TX1A IN THE PHONE SYSTEM UP THE WALL, INTO AND ACROSS THE CEILING. THEIR INSTALLER WILL LEAVE A 10' LOOP OF CABLE, CLEARLY MARKED WITH "MUSIC-ON-HOLD" IN THE CEILING ABOVE THE MUSIC SYSTEM EQUIPMENT RACK.
- WHEN PLAYNETWORK TEAM ARRIVES ON SITE THEY WILL RUN THE CABLE DOWN THE WALL, THROUGH THE CONDUIT AND MAKE THE FINAL CONNECTION TO THE TERMINAL STRIP IN THE MUSIC SYSTEM EQUIPMENT RACK. AT THAT TIME THE PLAYNETWORK INSTALLER WILL BE RESPONSIBLE FOR TESTING THE MUSIC ON HOLD FUNCTION OF THE PHONE SYSTEM IN ORDER TO ADJUST THE MUSIC TO THE PROPER LEVEL AND GET SIGN-OFF FROM THE GC AND/OR STORE MANAGEMENT.

M-Engineering
750 Brookside Blvd
Westerville, Ohio 43081
phone: 614.839.4639
fax: 614.838.2222
www.mengineering.us.com

Limited brands
LIMITED STORE PLANNING, INC.
d/b/a STORE DESIGN & CONSTRUCTION
Three Limited Parkway • Columbus, Ohio 43230
Telephone: 614.415.7000 • Fax: 614.415.7349

PROVISION ON BEHALF OF: VICTORIA'S SECRET
CONTRACTOR: NMA
PROJECT: PARK PLAZA MALL
LOCATION: 6000 W. MARKHAM STREET
SPACE# 2050
LITTLE ROCK, AR 72205
FULL REMODEL PACKAGE:
NMA GENERATION:
00059784 1A/E PROJECT #:
140153

010500295
VICTORIA'S SECRET
PARK PLAZA MALL
6000 W. MARKHAM STREET
SPACE# 2050
LITTLE ROCK, AR 72205
FULL REMODEL PACKAGE:
NMA GENERATION:
00059784 1A/E PROJECT #:
140153

PROJECT INFORMATION:
REQUIRED BY: DATE:
DESIGNED BY: BDB
DRAWN BY: BDB
CHECKED BY: DFC
DATE ISSUED: 05/23/2014
REVISIONS:
ELECTRICAL DETAILS
DRAWING NUMBER:
E04.02